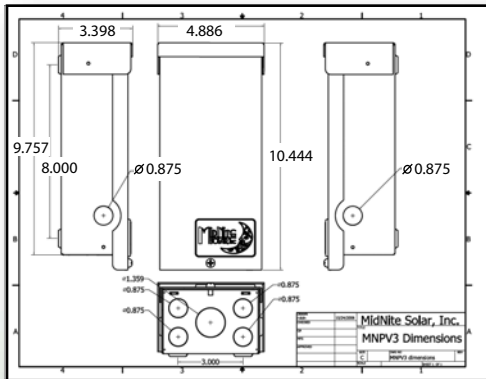


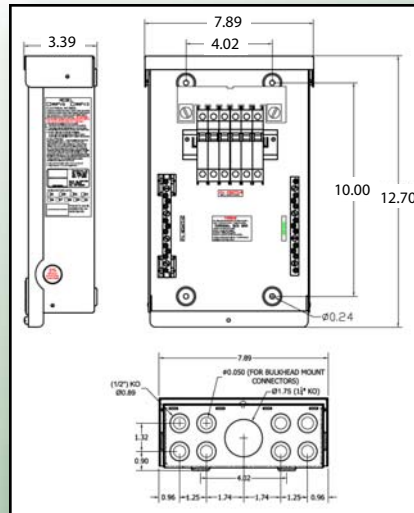
PV Combiners



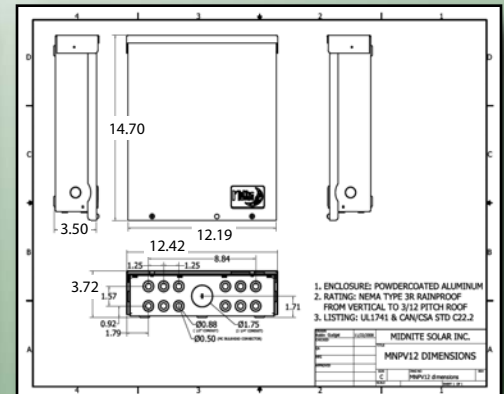
MidNite Solar offers a range of PV Combiners from our MNPV3 to the MNPV12v. This range of combiners accommodates PV systems as small as a two string off grid cabin up to 12 strings for a 50KW commercial grid tie inverter.



MNPV2-MC4 and MNPV3



MNPV4-MC4, MNPV6 and MNPV6-250



MNPV8-MC4, MNPV12 and MNPV12-250



MidNite Solar PV Combiner Specifications

	MNPV2-MC4 and MNPV3	MNPV4-MC4, MNPV6 and MNPV6-250	MNPV8-MC4, MNPV12 and MNPV12-250
Enclosure rating	Outdoor Rainproof NEMA 3R	Outdoor Rainproof NEMA 3R	Outdoor Rainproof NEMA 3R
Enclosure material	Powder coated aluminum with stainless hardware	Powder coated aluminum with stainless hardware	Powder coated aluminum with stainless hardware
Mounting options and angle	Vertical wall mount, pole mount or sloped roof mount to 14 degrees incline (3 in 12 roof pitch)	Vertical wall mount, pole mount or sloped roof mount to 14 degrees incline (3 in 12 roof pitch)	Vertical wall mount, pole mount or sloped roof mount to 14 degrees incline (3 in 12 roof pitch)
Number of PV strings	MNPV2-MC4 two strings, MNPV3 two strings with fuses, three strings with 150 volt breakers	MNPV4-MC4 four strings, MNPV6 four strings with fuses, six strings with 150 volt breakers, MNPV6-250 three strings with 300 volt breakers	MNPV8-MC4 four strings, MNPV12 eight strings with fuses and twelve strings with 150 volt breakers, MNPV12-250 six strings with 300 volt breakers
Maximum number of output circuits	1 for all	MNPV4-MC4 and MNPV6 is two, MNPV6-250 is one	2 for all
Wire range for string input	MNPV2-MC4 NA uses MC4 connectors, MNPV3 14-6 AWG	MNPV4-MC4 NA uses MC4 connectors, MNPV6 and MNPV6-250 14-6 AWG	MNPV8-MC4 NA uses MC4 connectors, MNPV12 and MNPV12-250 14-6 AWG
Maximum OCPD rating	30 amp with fuses and 63 amps with 150 volt breakers	30 amp with fuses, 63 amps with 150 volt breakers and 50 amps with 300 volt breakers	30 amp with fuses, 63 amps with 150 volt breakers and 50 amps with 300 volt breakers
Maximum output amps	60 amps for all	80 amps for fused, 120 amp for breakers	200 Amps with Fuses and 150 volt breakers, 168 amps with 300 volt breakers
Output wire range	14 to 1/0 AWG	14 to 1/0 AWG	14 to 1/0 AWG
Lug temperature rating	90 deg C	90 deg C	90 deg C
Deadfront	Custom molded plastic deadfront	Custom molded plastic deadfront	Custom molded plastic deadfront
Lockable	Yes	Yes	Yes
Rating	UL1741	UL1741	UL1741