

# SLP120-24U

## High Efficiency Multicrystalline PV Module

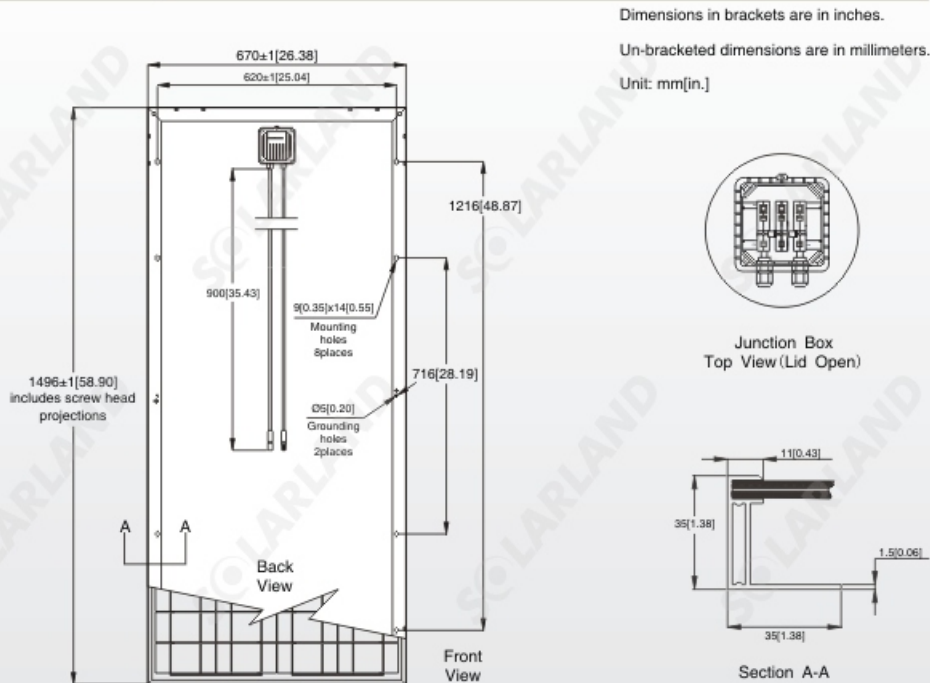
| Electrical Characteristics              | SLP120-24U        |
|---|-------------------|
| Product code                            | 120012401         |
| Maximum power (Pmax)                    | 120W              |
| Voltage at Pmax (Vmp)                   | 34.4V             |
| Current at Pmax (Imp)                   | 3.49A             |
| Open-circuit voltage (Voc)              | 43.2V             |
| Short-circuit current (Isc)             | 3.86A             |
| Temperature coefficient of Voc          | -(80±10)mV/°C     |
| Temperature coefficient of Isc          | (0.065±0.015)%/°C |
| Temperature coefficient of power        | -(0.5±0.05)%/°C   |
| NOCT (Air 20°C; Sun 0.8kW/m² wind 1m/s) | 47±2°C            |
| Operating temperature                   | -40°C to 85°C     |
| Maximum system voltage                  | 1000V DC          |
| Power tolerance                         | +10%/- 5%         |

\*STC: Irradiance 1000W/m², AM1.5 spectrum, module temperature 25°C

\*NOCT: Nominal operating cell temperature (the data is only for reference)



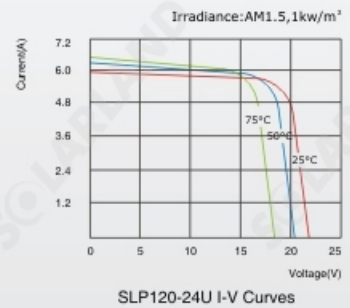
### Module Diagram



### Features

- Nominal 12V DC for standard output.
- Outstanding low-light performance.
- Heavy-duty anodized frames.
- High transparent low-iron, tempered glass.
- Rugged design to withstand high wind pressure, hail and snow load.
- Aesthetic appearance.

### Characteristics



| Specifications               | SLP120-24U   |
|------------------------------|--|
| Cells                        | Polycrystalline silicon solar cell                       |
| No. of cells and connections | 72(4X18)   |
| Module dimension             | 1496mm[58.90in.]x670mm[26.38in.]x35mm[1.38in.]           |
| Weight                       | 10.4kg[22.93lbs]   |
| Packing information(Carton)  | 1540mm[60.63in.]x715mm[28.15in.]x70mm[2.76in.]/(1pc/ctn) |

\*Limited warranty: 5-year limited warranty of materials and workmanship; 10-year limited warranty of 90% power output; 25-year limited warranty of 80% power output. For detail, please contact us.

\*Specifications are subject to change without notice at any time.