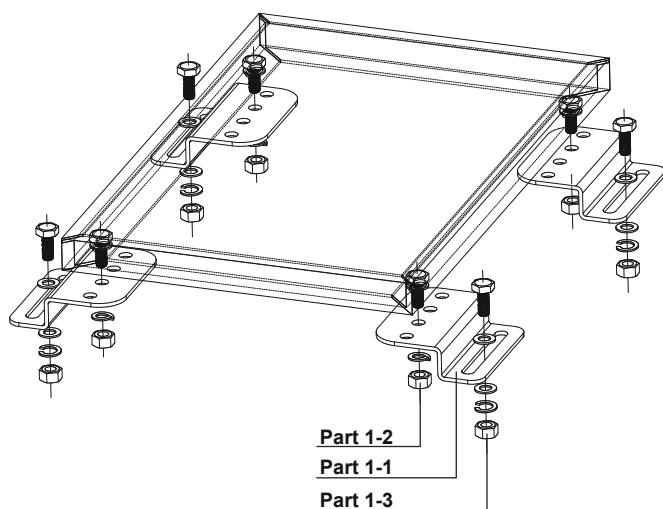


# Universal Flat Mount Bracket Kit

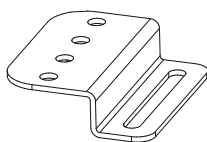
**SLB-0102**  
Installation Manual

**Thank you for purchasing SOLARLAND products. SLB-0102 mounting kits are used for 30W - 270W SOLARLAND panels on any flat surface.**

## Components And Parts



### Part



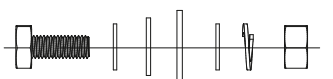
#### Part 1-1

|           |               |
|-----------|---------------|
| Component | Fixed Bracket |
| Material  | 5052Al        |
| Quantity  | 4             |



#### Part 1-2-1

|           |                 |
|-----------|-----------------|
| Component | Module Bolt(M8) |
| Material  | AISI304         |
| Quantity  | 4               |



#### Part 1-2-2

|           |                      |
|-----------|----------------------|
| Component | Mounting Bolt(M6x20) |
| Material  | AISI304              |
| Quantity  | 4                    |



#### Part 1-3

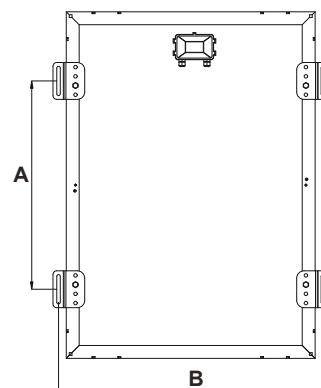
|           |                   |
|-----------|-------------------|
| Component | Mounting Bolt(M8) |
| Material  | AISI304           |
| Quantity  | 4                 |

Attached the PV module to the mounting foot using M8 screw/bolt supplied in the pack. Be careful of the bolt, flat washer, spring wash and nut sequences. Find suitable holes on the panel frame and fasten the mounting foot on it.

Securely attach the mounting feet to the flat surface (using M8 screw/bolt supplied or any other suitable fastenings), seal the mounting holes for any water penetration.

### Caution:

- Suggest using more mounting foot for large panels to ensure the safety.
- Apply some lubricant on the screw/bolts before installation.



- Drill holes in the mounting surface by the length of A and B measured from the panel before installation. Mount the panel together with the holes.